



# Integrated Voice Evacuation System

## VM-3000 Series

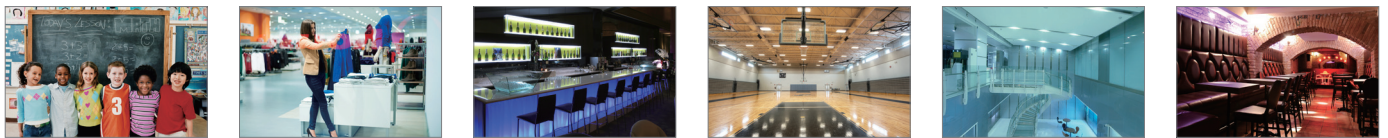


## SECURITY WITH CONVICTION

Continuously TOA brings the knowledge gained from years of experience in the development and production of sound and security systems, which is reflected in the high reliability of many installations worldwide.

The VM-3000 series is a cost-effective integrated public address and voice alarm system engineered with powerful digital signal processor (DSP). It is designed to fulfil the EN 54 European regulation for voice alarm as well as the UL 2572 and CAN/ULC-S576 certification, which complies with new NFPA 72 code governing Mass Notification Systems. So the VM-3000 series not only ensures voice alarm in an emergency but also high quality audio broadcasting.

The compact design enables the system to fit best in various small to medium sized applications such as schools, shopping centres or restaurants.



## AT A GLANCE

- Cost-effective integrated public address and voice evacuation system
- Easy installation and compact design
- EN 54 certified, UL 2572 and CAN/ULC-S576 listed
- Intuitive and userfriendly configuration through dedicated PC-Software
- Easy integration into existing building management systems
- Convenient remote maintenance saves time, effort and costs

## SYSTEM FEATURES

- > 6 – 60 assignable speaker zones
- > 240 – 3,600 watt, integrated system management amplifier
- > 4 – 13 MIC/LINE audio inputs (volume setting for each audio output)
- > 8 remote microphones max. (4x general + 4x emergency; EN 54: max. 2x emergency or 4x general + 1x emergency)
- > 2 selectable BGM audio inputs
- > 8 priority levels
- > 1,000 system events can be logged
- > 6 high quality electronic voice messages
- > LCD display of current status and configuration settings
- > Built-in emergency microphone
- > Simultaneous broadcast of 2 emergency messages (alert and evacuation)
- > Remote maintenance via LAN
- > Continuous speaker line monitoring without interruption of BGM or paging announcements (no external amplifier required)
- > Modbus protocol ready
- > Complete fault detection and indication

# COMPACT & RELIABLE

Maximum System Capacity	
Output Power	3,600W
Speaker Zones	60 zones
Remote Mic connection	8 units



EN 54-16 certified  
Certificate No: 1438-CPD-0180

# N O R M C O M P L I A N T & S E C U R E



## SYSTEM MANAGEMENT AMPLIFIER

VM-3240VA / VM-3360VA

- > 1 unit per system
- > 2 models available: 240 W or 360 W power output
- > 6 recorded general announcements and 2 recorded emergency announcements
- > 8 remote microphones max. (up to 4 emergency remote microphones)
- > 6 zones selectable from the front panel
- > Built-in high quality electronic voice message



## EXTENSION AMPLIFIER

VM-3240E / VM-3360E

- > System management amplifier can be expanded by connecting up to 9 extension amplifiers
- > 2 models available: 240 W or 360 W
- > 6 speaker line outputs
- > 8 control inputs and 8 control outputs for general purpose
- > 6 control inputs for emergency purpose and 3 control outputs for status information
- > Connection to system management amplifier via VM Link



## EMERGENCY REMOTE MICROPHONE

RM-300MF / RM-320F

- > Exclusively for broadcasts made by firemen in emergency situations
- > For activation of emergency mode, start and stop automatic broadcasts of emergency announcements, reset emergency signals and live microphone announcements
- > CPU-switch for emergency broadcast to all zones even in case of a CPU error
- > Up to 3 RM-320F extension units can be connected to the emergency microphone
- > 20 function buttons per extension unit
- > System software allows assigning of functions to the individual keys



## REMOTE MICROPHONE

RM-200M / RM-210

- > 11 function keys, 10 freely assignable
- > Zone, group and all-call paging, and activating pre-recorded messages
- > Extraordinary clarity and freedom from distortion by built-in compression circuit
- > Up to 4 RM-200M per system management amplifier
- > Up to 800m total cable length
- > RM-210: Extension unit with 10 keys with similar functions as the remote microphone



## EMERGENCY POWER SUPPLY

VX-2000DS

- > Supplies the DC power to the system
- > Keeps the batteries charged
- > Ambient temperature controlled charging voltage
- > Automatically switch-over in case of AC mains failure
- > Matching battery: 2 x 12V sealed lead batteries



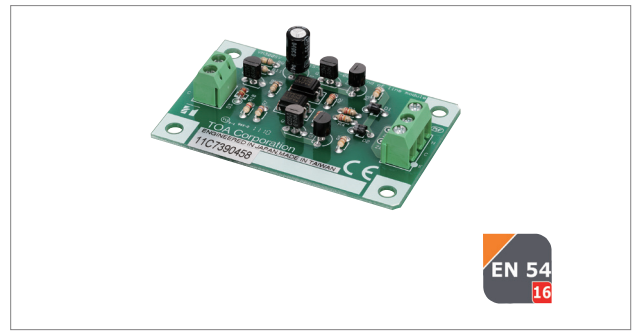
EN 54  
16

### SYSTEM AMPLIFIER

VP-2241 (1 x 240 W)

VP-2421 (1 x 420 W)

- > With built-in system amplifier input module VP-200VX
- > Module for transmission of status and audio signal between amplifier and control module



EN 54  
16

### PILOT TONE DETECTION MODULE

VM-300SV

- > Speaker line failure can be detected with high accuracy
- > Module for installation between the speaker line end and the emergency input terminal



EN 54  
4

### POWER SUPPLY UNIT

VX-200PS

- > To supply the power to VP system amplifiers



EN 54  
4

### 19" FRAME FOR VX-200PS

VX-2000PF

- > For rack mounting of up to 3 power supply units

### SYSTEM EXAMPLES

